

## Features

The 2250FS is an addressable 250 point fire alarm control unit (FACU) that is suitable for both new and retrofit applications.

### User interface

- Eight programmable LEDs
- A 4 x 40 character display that shows the following key FACU information at a glance:
  - Alarm
  - Supervisory
  - Trouble
  - CO/Priority 2
  - Ground fault
  - System normal
  - Silence
  - Acknowledge
  - Walk test

### MX initiating circuit

- Connect up to 250 addressable initiating devices using innovative MX technology on a single loop
- Smoke detectors are UL268 7th Edition listed
- One amp of current for each MX loop for powering sounder bases and other devices
- Class B or Class A wiring
- UL listed to 864
- Hard or soft addressing of initiating devices

### Compatible devices

- Smoke sensors, heat sensors, combination photo/heat
- Photo/heat/CO triple sensor
- Loop powered sounder bases
- Duct detector
- Mini IAM, Relay IAM, Monitor ZAM
- Single pull station and dual action break glass pull station. A dual action non-break glass pull station is available soon.
- Line isolator module

### Optional modules

- City circuit module with disconnect switch
- GSM 4G/LTE Cellular modem with antenna extension kit options
- Connected Services Gateway
- Available NAC Extender with 4 Class B NACs and 8A power supply; 120VAC or 240VAC versions

### Notification appliance circuit

- Four NACs, 3A maximum for each
- Use TrueAlert non-addressable notification appliances

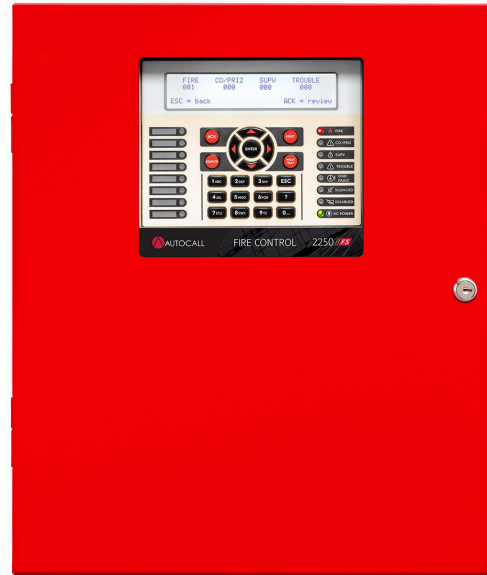
### General mechanical:

- Red cabinet

### 2250FS FACU listings reference:

- UL 864 - Control Units, Systems (UOJZ)
- UL 2017 - Emergency Alarm Control Units (CO detection), FSZI

Figure 1: 2250FS FACU front view



### Addressing options

- DIP switch
- Soft addressing
- QR code

### Remote LCD annunciator

- Maximum of eight for each 2250FS FACU
- 4 x 40 character display
- Alarm, trouble and supervisory LEDs
- Acknowledge, silence, and Reset switches
- Up, Down and Enter keys for quick menu access
- Key lock switch to prevent tampering

## Communication protocols

### IP Communicator

The IP Communicator provides the following specific building event information:

- Communicates point status changes, phone line status, and other off normal information to the central station and enterprise server
- Reports up to ten events through a call

The IP Communicator format is CID. You can configure the Communicator as either Per Point or Event Reporting Type.

### Central station communication

Central station supported interfaces include the following:

- Dual Line Phone Digital Alarm Communicator Transmitter (DACT) (ADEMCO Contact ID)
- 10/100 Base-T Ethernet (Fibro protocol)
- Cellular (Fibro protocol)

### Standards and codes

You can configure central station reporting with one path, or dual paths with a primary path and a secondary path. You can configure paths to use any of the external connections, telephone line, cellular or LAN Ethernet connections.

Antenna extension kits are available for installations with inadequate cellular signal.

\* At the time of publication only UL and ULC listings are applicable to ES Net network products. Additional listings may be applicable; contact your local product supplier for the latest status. Listings and approvals under Simplex Time Recorder Co. are the property of Tyco Fire Protection Products.

## Connected Services Gateway

The Connected Services Gateway (CSG) is an all-in-one interface card that supports central station communication and enables SafeLINC Cloud Services.

The CSG provides wired or wireless central station communication through LAN Ethernet, cellular and plain old telephone service (POTS)

The CSG enables authorized users to access their managed FACUS remotely through SafeLINC web or mobile app.

## Operator interface

The user interface is a 4 x 40 backlit LCD screen, with LEDs and keypad, see [2250FS screens](#). With the locking door closed, the glass window allows viewing of the display status LEDs.

The LED indicators display the general category of activity and the LCD displays more detail. Authorized users can unlock the door to gain access to the control functions and scroll through the display for additional detail.

## Operator interface and software features

- A logical, menu-driven touchscreen display for convenient access to detailed operator information
- Password access control
- Multiple automatic and manual diagnostics for maintenance reduction
- Alarm and Trouble History Logs are available for viewing from the display or downloaded to a service computer
- WALKTEST silent or audible system test performs an automatic self-resetting test cycle and supports up to eight WALKTEST groups

## Mechanical description

- Locking door with polycarbonate window
- Modules are power-limited except as noted, such as relay modules
- The bottom battery compartment accepts two batteries, up to 18 Ah, to be mounted within the cabinet without interfering with module space. Charger capacity is up to 25 Ah. You can use batteries up to 25 Ah in a separate battery cabinet. For information about batteries greater than 18 Ah and external battery cabinets, see [Module and accessories selection information](#)

## 2250FS screens

### System normal



### Fire



### Supervisory



### Trouble



### Menu



### CO-PR12



## Product selection

**Table 1: 2250FS FACU product selection**

| Model     | Color | Description   | Standby | Alarm  |
|-----------|-------|---|---------|--------|
| A250-9101 | Red   | 2250FS FACU with 4 x 40 LCD display, single addressable MX initiating loop with 250 devices maximum and 4 conventional NAC circuits | 185 mA  | 225 mA |

**Table 2: Add-ons and accessories**

| PID  | Device description  | Device type         |
|--|---|---------------------|
| A2975-9812   | Trim Ring for Semi-Flush Mounting   | Accessories         |
| A250-9800  | Connected Services Gateway and IP Communicator Module   | Add-on module       |
| A2975-9234   | Gateway Enclosure, red  | Gateway enclosure   |
| 734-383  | Communication cable for external gateway  | Communication cable |
| A2050-9909   | City Circuit Module with disconnect switch for addressable panels, with chassis, maximum one per panel.                           | Add-on module       |
| A606-9101  | LCD Annunciator, a maximum of eight for each 2250FS   | Add-on module       |
| A2081-9028   | Circuit Protection, isolated loop circuit protector (ILCP). See note.   | Surge protector     |
| A2081-9044   | Circuit Protection, overvoltage protector. See note.  | Surge protector     |
| 2080-9047  | DACT cable, 14 ft (4.3 m) long. RJ45 plug at one end, spade lugs at the other. Order one for each phone line connection required. | Communication cable |
| <b>Note:</b> Required if wiring is routed outside the building. For NAC, DACT, Annunciator, City circuits, and Aux Power |   |                     |

**Table 3: Cellular modem and extension kits**

| PID       | Device description                    |
|-----------|---------------------------------------|
| A007-6417 | GSM 4G/LTE Cellular module kit        |
| 4007-6405 | 15 ft (4.57 m) antenna extension kit  |
| 4007-6406 | 25 ft (7.62 m) antenna extension kit  |
| 4007-6407 | 50 ft (15.24 m) antenna extension kit |

**Table 4: MX sensors**

| PID        | Device description                       |
|------------|--|
| A4098-5701 | MX Photo Sensor with Address Switch      |
| A4098-5702 | MX Photo/Heat Sensor with Address Switch |
| A4098-5703 | MX Heat Sensor with Address Switch       |
| A4098-5704 | MX Triple Sensor with Address Switch     |

**Table 5: Devices**

| PID        | Device description                           |
|------------|--|
| A4090-5206 | Line Isolator Module, for MX                 |
| A4090-5258 | Mini IAM, with DIP switch                    |
| A4090-5259 | Relay IAM, with DIP switch                   |
| A4090-5260 | Monitor ZAM, with DIP switch                 |
| A4099-5214 | Pullstation Single Action, with DIP switch   |
| A4099-5215 | Pullstation, DA Break Glass, with DIP switch |
| A4099-5216 | Double Action Station, push type             |

**Table 6: Bases**

| PID        | Device description   | Device type      |
|------------|--|------------------|
| A4098-5210 | 4 in. MX Digital Loop LP Sounder Base, 85dB at 10 ft, existing     | Sounder base     |
| A4098-5207 | 5 in. Addressable Sensor Base with remote LED output, existing     | Standard base    |
| A4098-5261 | 4 in. Detector Base  | Standard base    |
| 4098-9799  | 6 in. Adaptor for 5 in. Base. Also works on a 4 in. octagonal box. | Adaptor for base |
| 4098-5227  | 5 in. Adaptor for 5210   | Adaptor for base |
| 4098-5228  | 6 in. Adaptor for 5210   | Adaptor for base |

**Table 7: Addressable MX sensors**

| PID        | Device description                       | Compatible bases |                                |                          |                              |
|------------|--|------------------|--------------------------------|--------------------------|------------------------------|
|            |  | 4 in. standard   | 4 in. sounder, non-addressable | 5 in. standard, existing | 6 in. adaptor for 5 in. base |
| A4098-5701 | MX Photo Sensor with Address Switch      | A4098-5261       | A4098-5210                     | A4098-5207               | 4098-9799                    |
| A4098-5702 | MX Photo/Heat Sensor with Address Switch | A4098-5261       | A4098-5210                     | A4098-5207               | 4098-9799                    |
| A4098-5703 | MX Heat Sensor with Address Switch       | A4098-5261       | A4098-5210                     | A4098-5207               | 4098-9799                    |
| A4098-5704 | MX Triple Sensor with Address Switch     | A4098-5261       | A4098-5210                     | A4098-5207               | 4098-9799                    |

**Table 8: Duct housing**

| PID       | Device description  |
|-----------|---|
| 4098-5214 | Duct sensor housing only, addressable. Order addressable sensor separately. |

**Table 9: Sampling tubes**

| PID       | Device description   |
|-----------|--|
| 4098-9854 | Sampling tube for 12 in. (305 mm) duct width                       |
| 4098-9855 | Sampling tube for 13 in. to 23 in. (330 mm to 584 mm) duct width   |
| 4098-9856 | Sampling tube for 24 in. to 46 in. (610 mm to 1168 mm) duct width  |
| 4098-9857 | Sampling tube for 46 in. to 71 in. (1168 mm to 1803 mm) duct width |
| 4098-9858 | Sampling tube for 71 in. to 95 in. (1803 mm to 2413 mm) duct width |

## Module and accessories selection information

**Table 10: Field installed optional modules**

| SKU        | Description                                     | Supv.  | Alarm  |
|------------|---|--------|--------|
| A606-9101  | LCD annunciator. Maximum of eight per panel.    | 40 mA  | 48 mA  |
| A2050-9909 | City Circuit Module with disconnect switch      | 30 mA  | 60 mA  |
| A250-9800  | Connected Services Gateway with IP Communicator | 125 mA | 125 mA |

**Table 11: Batteries**

| SKU       | Capacity | Battery mounting details   |
|-----------|----------|--|
| 2081-9286 | 7 Ah     | 12 V Batteries for cabinet mounting; select one battery model per system standby requirements; order quantity of two; to be wired in series for 24 VDC |
| 2081-9274 | 10 Ah    |  |
| 2081-9288 | 12.7 Ah  |  |
| 2081-9275 | 18 Ah    |  |
| 2081-9287 | 25 Ah    | Requires A009-9801 external battery cabinet, see <a href="#">Table 12</a>  |

**Table 12: Battery cabinets**

| SKU       | Color | Capacity                            | Dimensions (H x W x D)  | Description  |
|-----------|-------|-------------------------------------|---|--|
| A009-9801 | Beige | For up to 25 Ah batteries, see note | 13 1/2 in. x 16 1/4 in. x 5 3/4 in (413 mm x 343 mm x 146 mm) | External battery cabinet without charger for mounting close-nipped to the fire alarm control unit cabinet; includes locking solid door. Use battery harness 734-304 for a NAC power supply and harness 734-303 for an IDNAC power supply. Battery harnesses are shipped with the FACU. |

**Table 13: Accessories**

| SKU       | Description                                  |
|-----------|--|
| 2081-9411 | Battery Bracket Addressable, for seismic use |

## Additional NAC power

For additional NAC power, use the 4009 NAC Extender. Refer to datasheet S4009-0002 for additional information.

**Table 14: NAC power accessories**

| PID       | Description   |
|-----------|---|
| A009-9201 | 4009 IDNet NAC Extender with 4, Class B NACs and 8 A power supply. 120 VAC input, seismic tested, UL Listed |
| A009-9301 | 4009 IDNet NAC Extender with 4, Class B NACs and 8 A power supply. 240 VAC input, UL Listed                 |
| A009-9807 | NAC Option Card. Adds four conventional Notification Appliance Circuits, one maximum                        |
| A009-9808 | Dual Class A adapter, for two NAC outputs, four maximum   |
| 2975-9802 | Semi-Flush Trim Kit, red trim   |

## 2250FS mounting and module location reference

Figure 2: 2250FS board and cabinet, in.

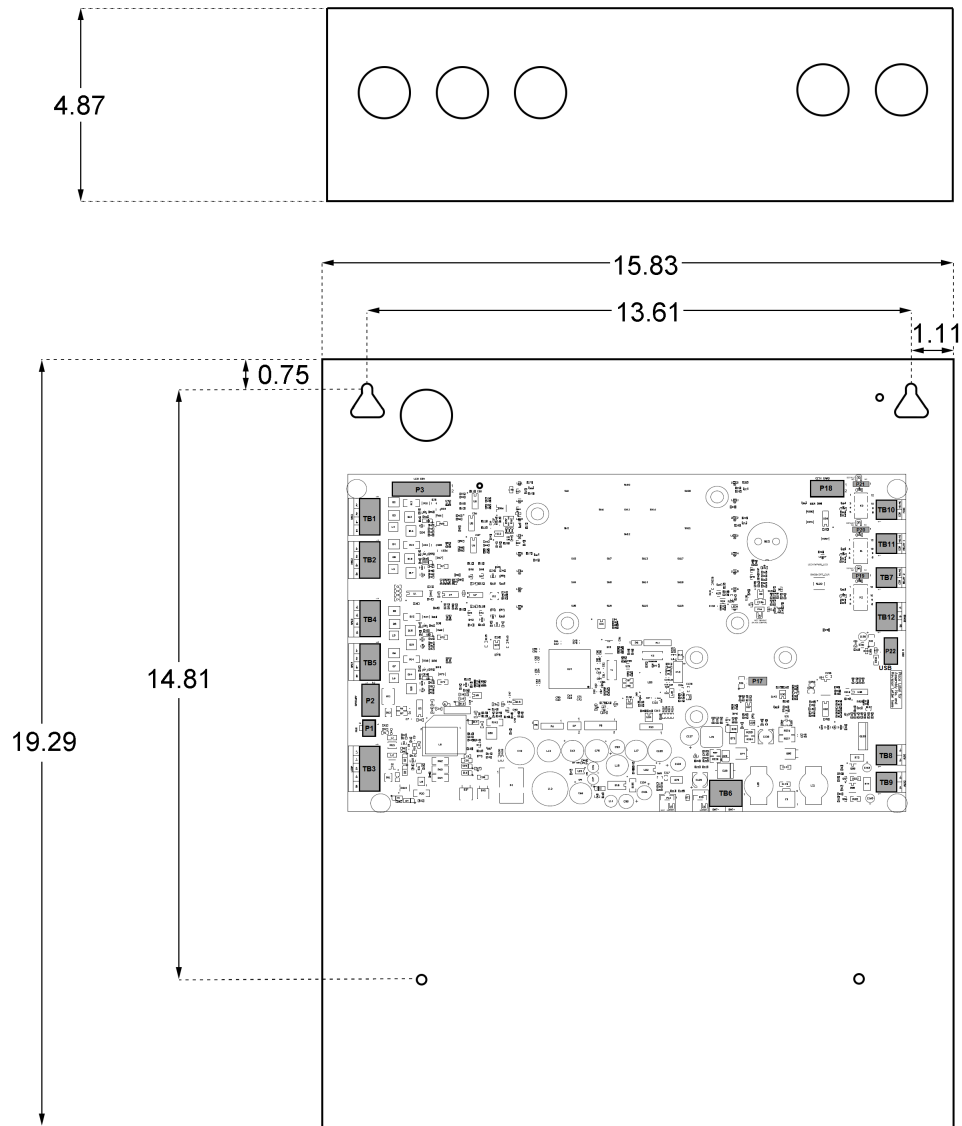


Figure 3: 2250FS control unit board

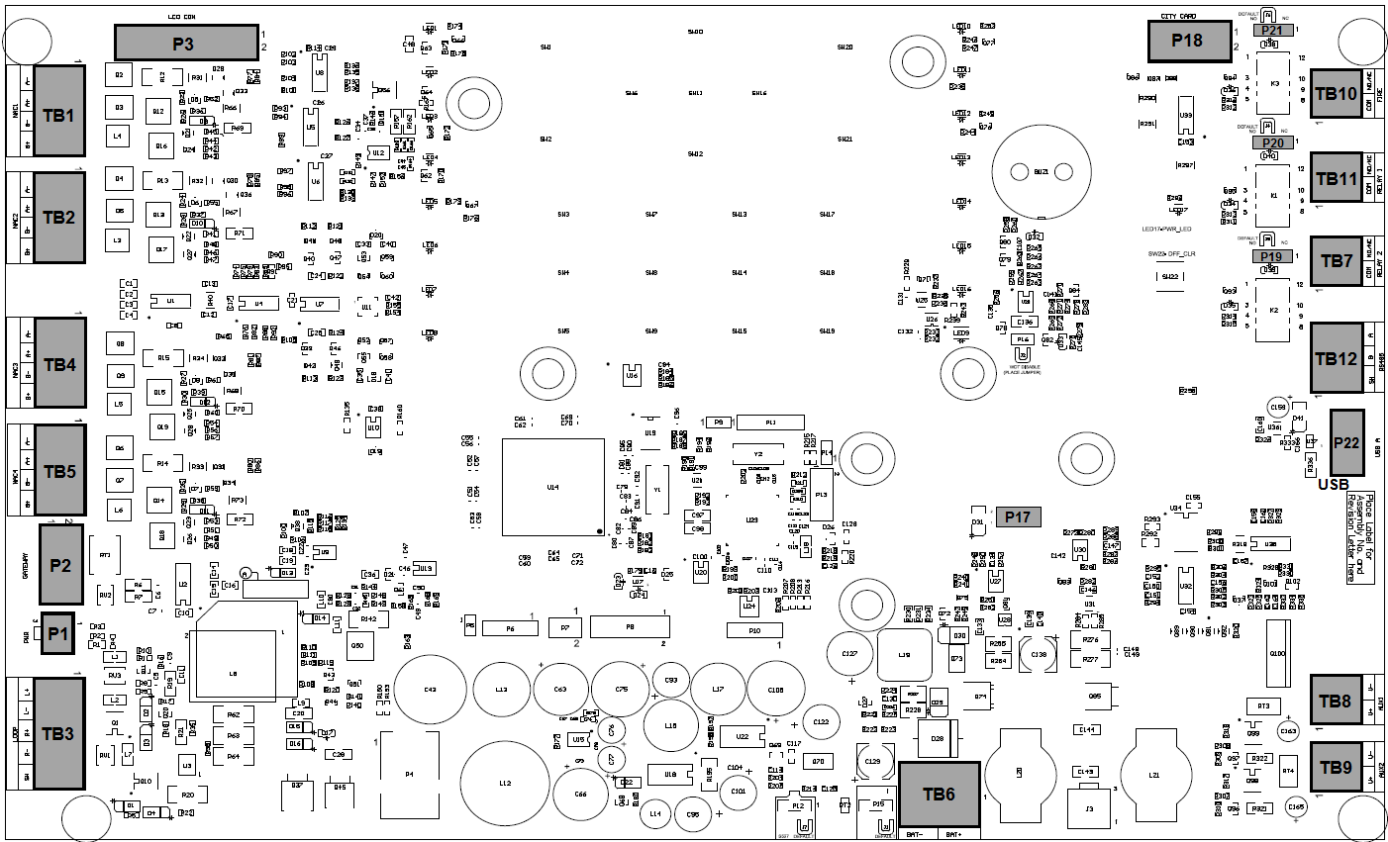


Table 15: Main components information

| Identifier | Description      | Identifier | Description                    | Identifier | Description                |
|------------|------------------|------------|--------------------------------|------------|----------------------------|
| TB1        | NAC1             | TB7        | Relay-3                        | P3         | LCD display connector      |
| TB2        | NAC2             | TB8        | Aux-1 (Non-resettable power)   | P17        | RFID connector             |
| TB3        | MX Loop          | TB9        | Aux-2 (Resettable power)       | P18        | City Card connector        |
| TB4        | NAC3             | TB10       | Relay-1                        | P19        | Jumper for Relay-3 setting |
| TB5        | NAC4             | TB11       | Relay-2                        | P20        | Jumper for Relay-2 setting |
| TB6        | Battery terminal | P1         | Gateway module connector       | P21        | Jumper for Relay-1 setting |
|            |                  | P2         | Gateway module power connector | P22        | USB port                   |

## General specifications

Table 16: General specifications

| Specification                          | Rating  |
|--|---|
| AC input ratings                       | Input voltage   |
|  | 120 VAC, 50/60 Hz, 240 VAC, 50/60 Hz, Auto-select   |
| Power supply output ratings            | Input current, standard   |
|  | 2 A maximum @ 120 VAC input; 1 A maximum @ 240 VAC input  |
|  | Power supply output rating  |
|  | 6 A maximum @ 24 VDC in alarm   |
|  | Battery charger   |
|  | Temperature compensated charger is rated for up to 25 Ah  |
|  | Standby current   |
|  | 150mA   |
| Notification appliance circuits (NACs) | 3 A maximum @ 24 VDC, per circuit; available as Class A or Class B;<br>Class B end-of-line resistor = 10 kohm, 1/2 W; Model A4081-9008 (P/N 733-894)<br>See note. |
| Maximum load allowed on MX loop        | 945 mA at 40 V  |

**Table 16: General specifications**

| Specification   |  | Rating  |  |
|---|--|---|--|
| Annunciator Communications  | Quantity supported   | Up to eight annunciators  |  |
|   | Wiring type  | Twisted pair; 18 AWG (0.82 mm <sup>2</sup> )  |  |
|   | Bus-style wiring   | Up to 4000 ft (1219 m); 0.58 μF (580 nF) maximum capacitance; 35 ohm  |  |
|   | Line matching resistor   | Bus-style, connect one at FACU and one at end of line.  | 100 ohm, 1/2 W, A4081-9011, part number 733-974                |
|   |  | T-tap, connect one at FACU and one at farthest device.  |  |
| Suppression   | Use A2081-9044 Overvoltage Protectors where wiring leaves and enters a building, refer to data sheet AC2081-0016 |   |  |
| Auxiliary power output  | Aux 1<br>Aux 2   | 1 A maximum @ 24 VDC is available at each auxiliary circuit. Total load on FACU power supply must be within 6 A |  |
| Standard auxiliary relay outputs  | Relay 1  | Trouble operation   | Contacts rated 24 VDC at 2 A, jumper selectable as N.O or N.C. |
|   | Relay 2 and 3  | Programmable operation  |  |
| <b>Note:</b> The NAC Class B circuit can additionally support 3.9 kohm, 4.7 kohm, 5.1 kohm, 5.6 kohm and 15 kohm values for end-of-line (EOL) resistors to accommodate retrofit applications. |  |   |  |



## Additional product reference data sheets

**Table 17: Additional product reference data sheets**

| Title  | Document number |
|--|-----------------|
| 4009 IDNet NAC Extender  | AC4009-0002     |
| Mini-IAM (Individual Addressable Module) Model A4090-5258  | AC4090-0020     |
| Individual Addressable Relay Module (Relay IAM) Model A4090-5259   | AC4090-0021     |
| Addressable Manual Stations Single and Dual Action   | AC4099-0008     |
| A4901-9820 Electronic Horn, Free-Run or SmartSync Operation, Non-Addressable                                     | AC4901-0010     |
| SmartSync Two-Wire Operation, Non-Addressable Mini-Horns   | AC4901-0013     |
| SmartSync™ 2-Wire Operation, Non-Addressable Electronic Chime  | AC4902-0004     |
| Non-Addressable Audible/Visible Notification Appliances for 4-Wire Operation (Horn/Strobe)                       | AC4903-0011     |
| Visible Notification Appliances with Synchronized Flash; Non-Addressable, SmartSync Operation Compatible         | AC4906-0001     |
| SmartSync Operation Audible/Visible Notification with Horn and Synchronized Flash, Non-Addressable               | AC4906-0002     |
| Weatherproof Notification Appliances (non-addressable) Wall Mount Visible Only (V/O) and Audible/Visible (A/V)   | AC4906-0010     |
| Multi-Candela, High Intensity (non-addressable) Strobe and Horn/Strobe   | AC4906-0011     |
| SmartSync Operation Audible/Visible Notification with Chime and Synchronized Flash, Non-Addressable              | AC4906-0012     |
| Multi-Tone Horns; SmartSync Controlled or Free-run; with 520 Hz output, Non-Addressable                          | AC49CMT-0001    |
| Audible/Visible Notification Appliances; Multi-Tone FM Approved* Horn/Strobe with 520 Hz Output, Non-Addressable | AC49CMTV-0001   |

## 2250FS annunciators

**Figure 4: LCD annunciator**

